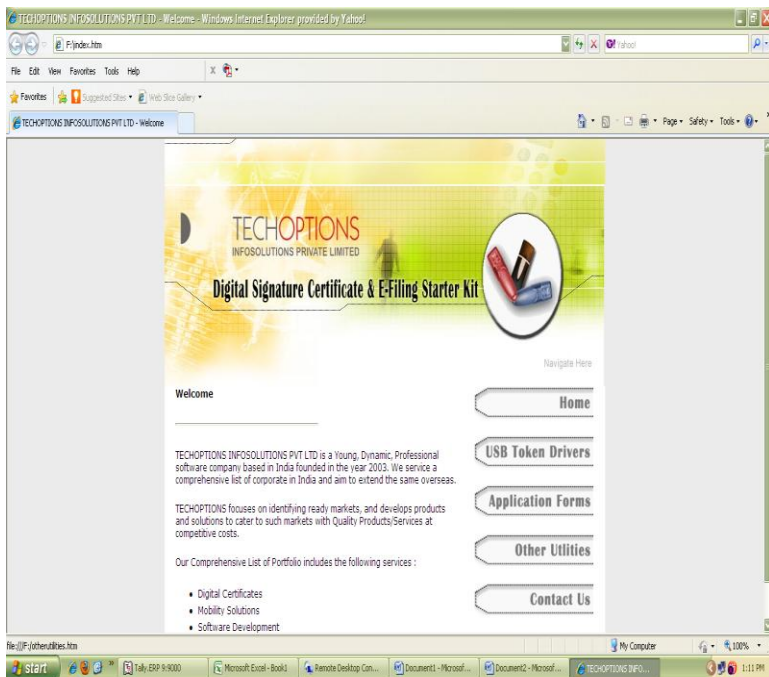


AFTER INSERTING THE CD YOU WILL GET ANY OF THE BELOW  
2 WINDOWS

FOLLOW AS PER THE WINDOW IS APPEARED...

①



- 1) CLICK ON THE USB TOKEN DRIVERS BUTTON
- 2) CLICK ON 72K DOWNLOAD BUTTON SHOWN BELOW



Aladdin eToken Pro

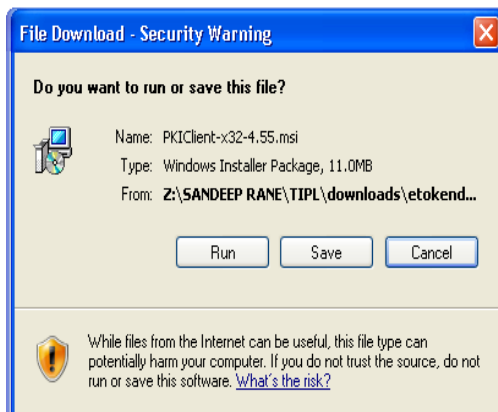


eToken Properties ([Click Here](#))

- To be installed before using E Token USB Token for the first time.

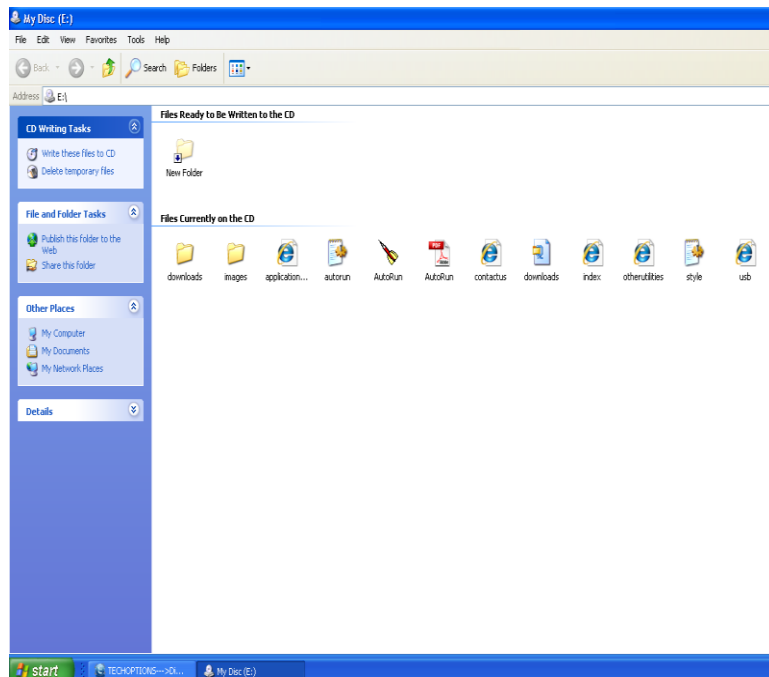
3)CLICK ON THE SAVE BUTTON & SAVE THE FILE ON DESKTOP

4)LATER DOUBLE CLICK THE SAVED FILE & RUN THE SET UP



②

IF THE BELOW WINDOW APPEARS ,



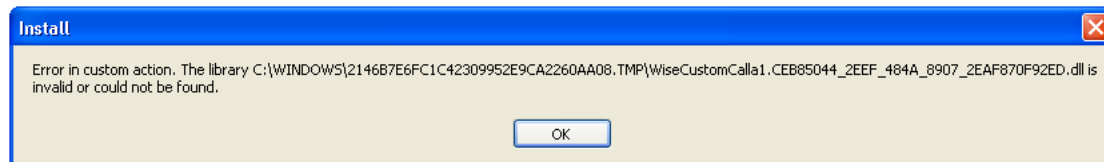
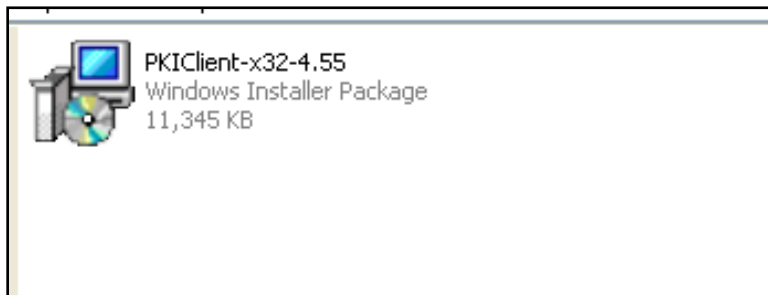
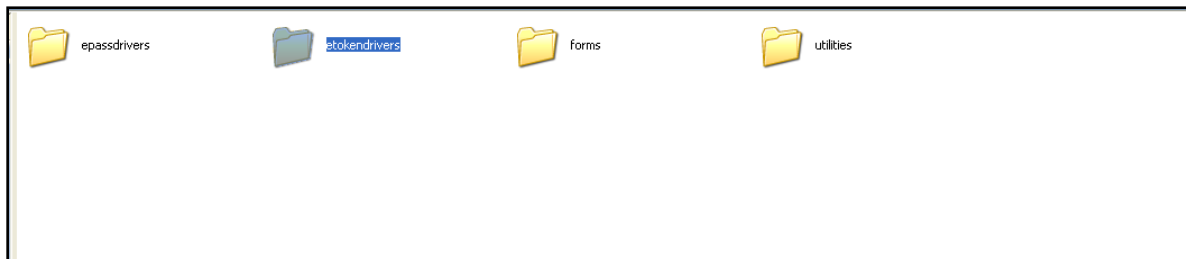
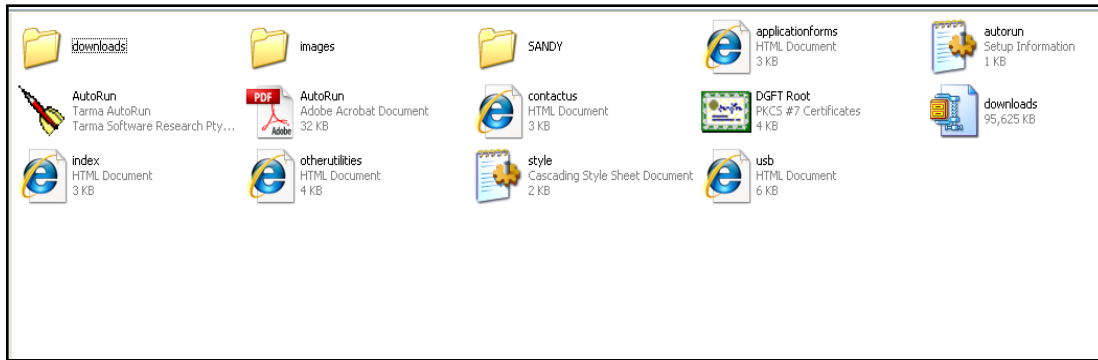
- 1)OPEN THE DOWNLOADS FOLDER & FOLLOW THE BELOW MENTIONED PROCESS

# Token Drivers Installation Process

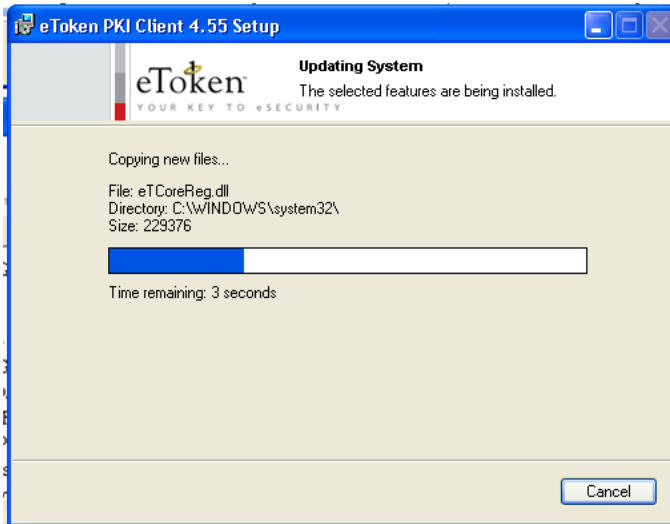
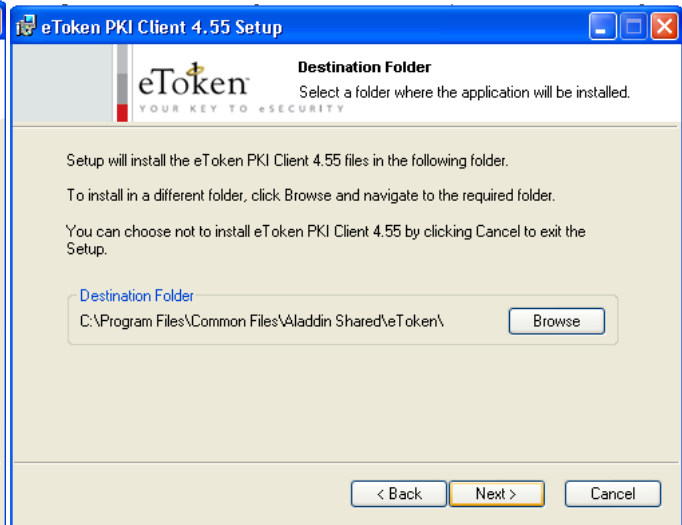
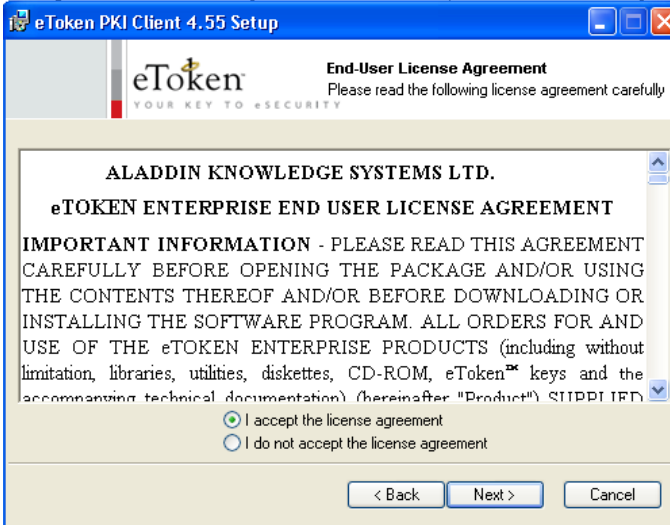
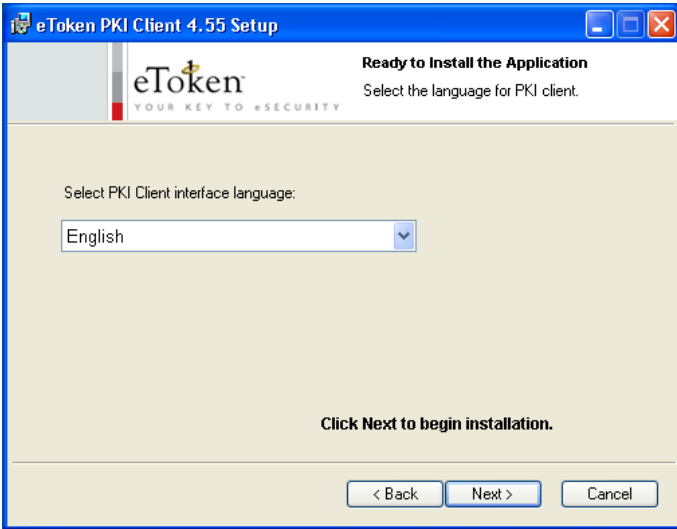
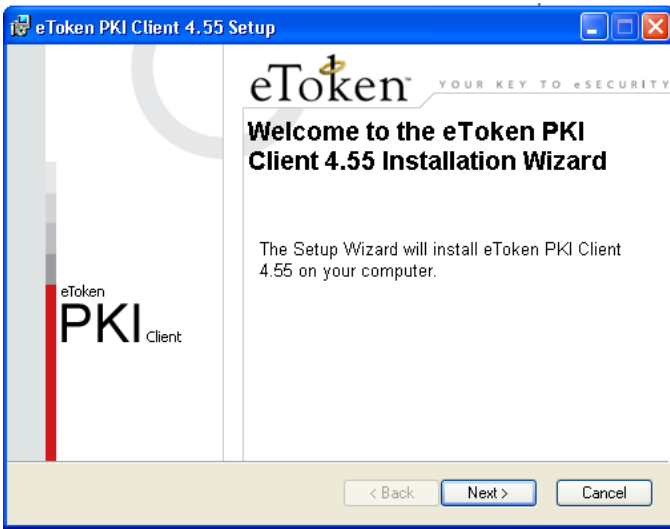
**WARNING :- TOKEN MUST BE UNPLUGGED BEFORE STARTING THE INSTALLATION.**

FIRST BROWSE THE CD BY GOING IN TO MY COMPUTER.....

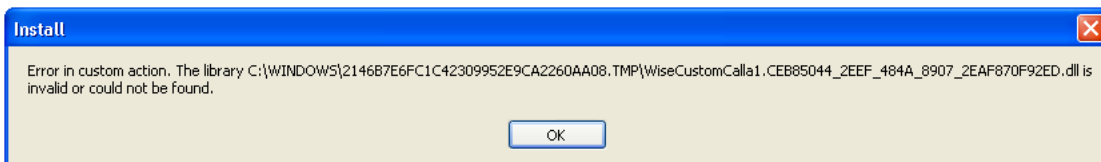
- 1) OPEN THE DOWNLOAD FOLDER & SELECT THE ETOKENDRIVERS FOLDER
- 2) SELECT THE 72K FOLDER
- 3) SELECT THE PKIClient-x32-4.55 FILE & ENTER...

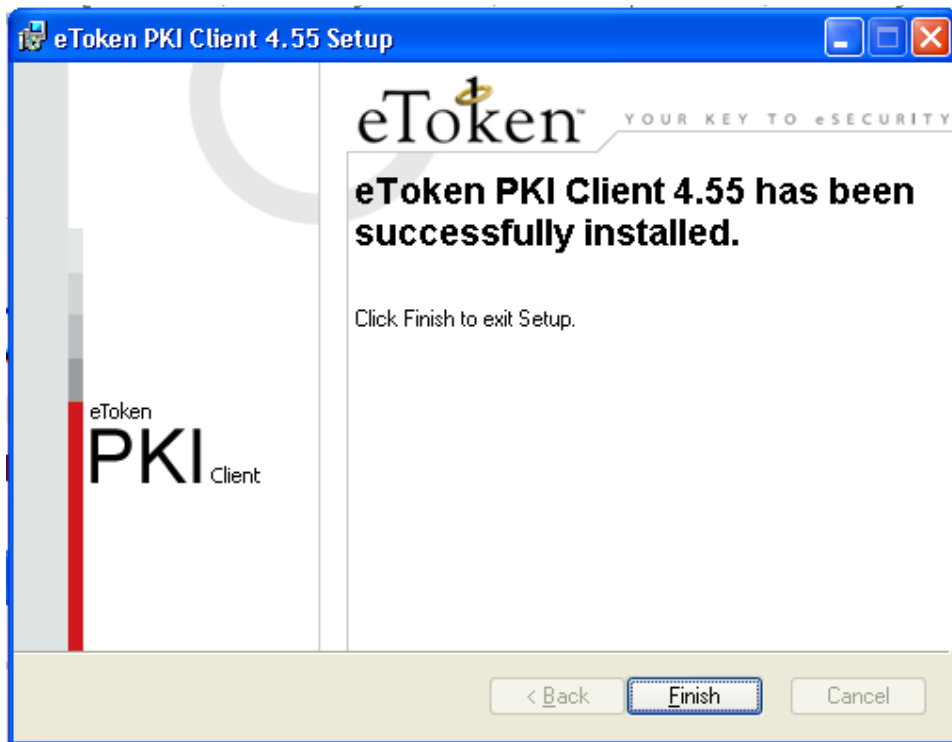


- 4) IF YOU GET THIS ERROR FOR 2 - 3 TIMES SELECT OK & YOU WILL GET THE FOLLOWING WINDOW SELECT "NEXT" ON THE SAME



- 5) FOLLOW THE SHOWN PROCESS ,ACCEPT THE AGREEMENT LICENCE BY CLICKING “I ACCEPT THE LICENCE AGREEMENT” .AFTER THIS PROCESS IF IT SHOW THE BELOW ERROR FOR 2-3 TIMES CLICK OK & THEN THE FINISH WINDOW WILL APPEAR





CLICK ON FINISH & THE SETUP IS COMPLETE & YOU CAN PLUG IN THE TOKEN & START USING IT

**Tip :-**

- 1) For Longer Life Of Token Please Unplug The Token Everytime You Restart The Pc.
- 2) Also Unplug The Token While Installing Or Uninstalling Softwares Like Java.